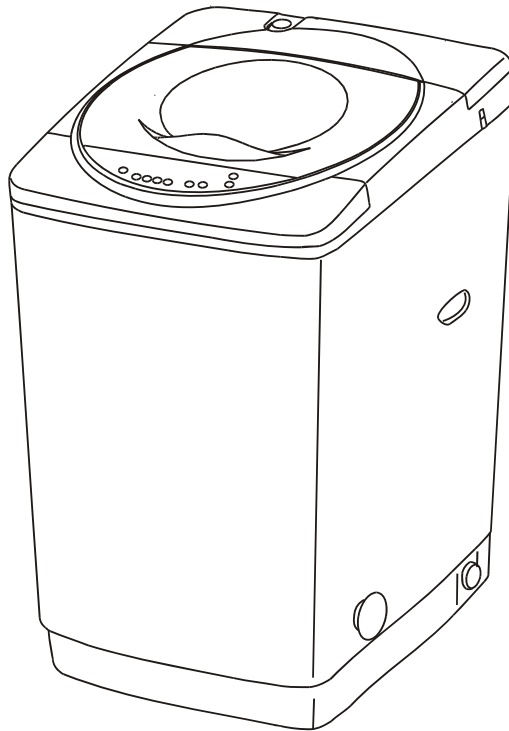


ZEROWATT

FULLY AUTOMATIC WASHING MACHINE

MODEL: XQB55-526

Service Manual

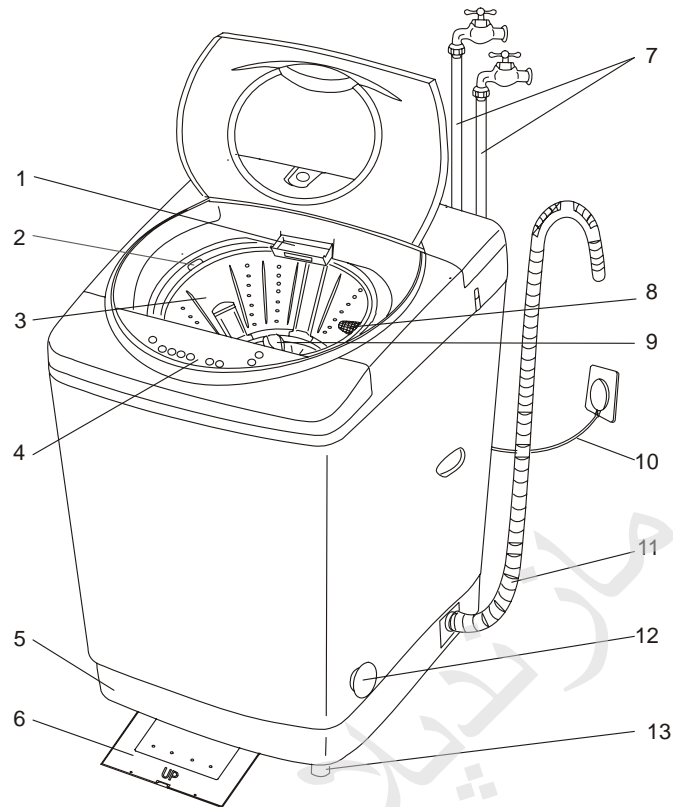


CONTENTS

- 1.PARTS & FEATURES**
- 2.IMPORTANT SAFETY INSTRUCTIONS**
- 3.INSTALLATION INSTRUCTIONS**
- 4.CONTROL PROGRAM**
- 5.CIRCUIT DIAGRAM**
- 6. HOW TO DISASSEMBLE THE UNIT**
- 7. TROUBLESHOOTING**
- 8.EXPLOSION VIEWS & PARTS LISTS**



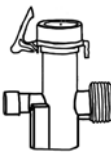
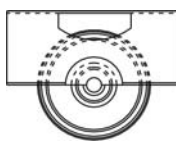



1.PARTS & FEATURES



1. DETERGENT CASE
2. SOFTENER DISPENSER
3. INNER TUB
4. CONTROL PANEL
5. BASE
6. NOISE PROOF PLATE
7. INLET HOSE (2 PCS)
8. LINT FILTER
9. PULSATOR
10. POWER SUPPLY CORD
11. DRAIN HOSE (1 PC)
12. LEVEL ADJUSTABLE KNOB
13. ADJUSTABLE FOOT

ACCESSORIES

INLET HOSE  2 PIECES	NOISE PROOF PLATE  1 PIECE	WATER INLET QUICK CONNECT ASSEMBLY  1 PIECES	CASTER  4 PIECES	CONNECTOR FOR FAUCET  1 PIECES
---	---	---	--	---



2.IMPORTANT SAFETY INSTRUCTIONS

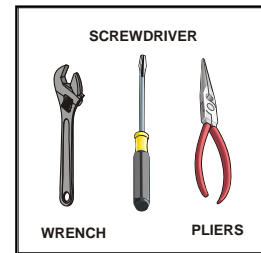
⚡WARNING⚡	To reduce the risk of fire, electrical shock, or injury when using your portable washer, follow these basic precautions:
<ul style="list-style-type: none">• Read all instructions before using the portable washer.• Do not wash articles that have been previously cleaned in, washed in, soaked in, or spotted with gasoline, dry-cleaning solvents, or other flammable or explosive substances, as they give off vapors that could ignite or explode.• Do not add gasoline, dry-cleaning solvents, or other flammable or explosive substances to the wash water. These substances give off vapours that could ignite or explode.• Under certain conditions, hydrogen gas may be produced in a hot-water system that has not been used for 2 weeks or more. HYDROGEN GAS IS EXPLOSIVE. If the hot-water system has not been used for such a period, before using a washing machine, turn on all hot-water faucets and let water flow from each for several minutes. This will release any accumulated hydrogen gas. As the gas is flammable, do not smoke or use an open flame during this time.• DANGER or WARNING: Risk of child entrapment. Child entrapment and suffocation are not problems of the past. "Junked or abandoned appliances are still dangerous . . . even if they will "just sit in the garage a few days."• Before you throw away your old portable washer: Take off the lid.• Never allow children to operate, play with, or crawl inside the portable washer. Close supervision of children is necessary when the washer is used near children.• Do not reach into the washer if the agitator or inner tub is moving.• Do not tamper with controls.• Do not repair or replace any part of the washer or attempt any servicing unless specifically recommended in the user-maintenance instructions or in published user-repair instructions.• Never clean portable washer parts with flammable fluids. The fumes can create a fire hazard or explosion.• Do not place the washer in steamy rooms or where the washer is directly exposed to rain. Moisture may destroy the electrical insulation causing an electrical shock hazard.• Do not store, use gasoline, or any other flammable vapors and liquids in the vicinity of this or any other portable washer. The fumes can create a fire hazard or explosion.• If the power cord is damaged, it must be replaced by the manufacturer or its service agent or a similar qualified person in order to avoid a hazard. <p style="text-align: center;">-Save these instructions-</p>	



3.INSTALLATION INSTRUCTIONS

➤ BEFORE USING YOUR PORTABLE WASHER

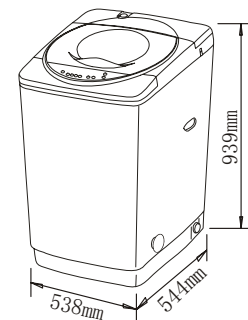
- Remove the exterior and interior packing.
- You will need the following tools:
 - Wrench
 - Pliers
 - Screwdriver
- Check to be sure you have all of the following parts:
 - 2 Inlet Hoses
 - 1 Water Inlet Quick Connect Assembly
 - 1 Connector For Faucet
 - 1 Noise Proof Plate With Screws
 - 4 Casters
- Remove shipping brace. Note - It should be saved and used (to prevent damage to washer components) whenever washer is moved or transported to a new location.
- Clean the interior surface with lukewarm water using a soft cloth.
- Allow 2 inches of space between the back and sides of the appliance.
- Put your laundry into the washer evenly. Uneven laundry may cause noise or vibration.
- Don't use excessively hot water (50°C or more). Plastic parts may be deformed or damaged. Also, clothing may be deformed or bleached.
- Before washing, check all pockets. If nails or pins remain in pockets, they may damage the washer or clothes.
- Never splash water on the control panel.
- Plug the washer into an exclusive properly installed-grounded wall outlet. Do not under any circumstances cut or remove the third (ground) prong from the power cord. Any questions concerning power and/or grounding should be directed toward a certified electrician or an authorized Avanti Products service center.



➤ SELECTING A LOCATION

Before you install the portable washer, select a location with the following characteristics:

- A hard level surface (if the surface is uneven, see Adjusting The Adjustable Foot).
- Away from direct sunlight. Direct sunlight may affect the acrylic coating, plastic and electrical components.
- Adequate ventilation.
- Away from sources of heat such as coal or gas. Make sure that the washing machine does not stand on its power cord. Ventilation openings must not be obstructed by carpeting when the portable washer is installed on a carpeted floor.



➤ ADJUSTING THE ADJUSTABLE FOOT

If the floor is uneven adjust the adjustable foot (do not insert pieces of wood, or any other objects under the feet).

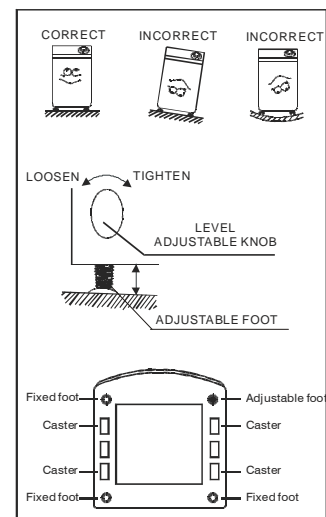
Loosen the adjustable foot by turning the level adjustable knob with your hand until it is at the desired height.

Tighten the adjustable foot by turning the level adjustable knob in the reverse direction.

Place the washer on a sturdy flat surface.

If the washer is placed on an uneven or weak surface, noise or vibration occurs (Allowable is 1°).

For portable applications, the washing machine comes equipped with four north/south casters that can easily be installed to assist in the movement of the machine to and from the sink. Lay the unit on its back. Install the casters into the bottom of the base as indicated.

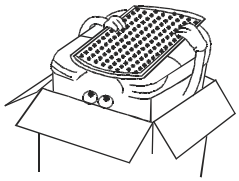
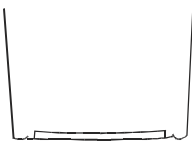
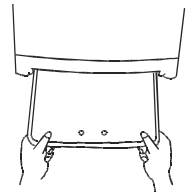
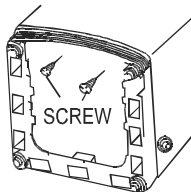




Return the machine to the upright position. When the machine is positioned for operation set the height of the adjustment foot slightly higher than the front caster to prevent movement of the machine during wash and spin operation.

NOTE: *Not all movement will be totally eliminated, this is normal.*

➤ INSTALLING THE NOISE PROOF PLATE

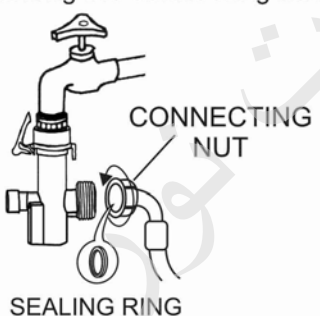
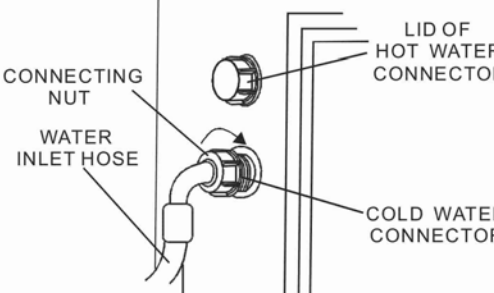
<p>Take the noise proof plate out of the package .</p> 	<p>The opening of the noise proof plate is at the bottom of the machine.</p> 	<p>Insert the noise proof plate into the washing machine base.</p> 	<p>Lay down the machine and secure the noise proof plate by fastening the two set screws.</p> 
--	--	--	---

➤ CONNECTING THE WATER SUPPLY HOSE

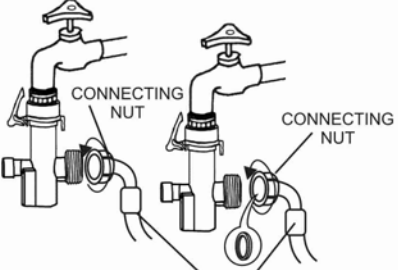
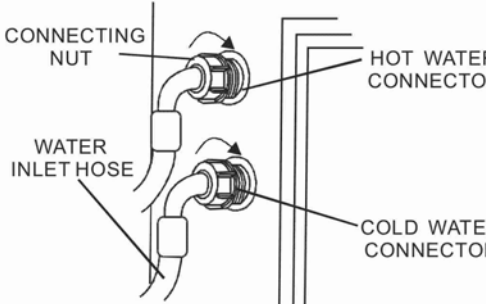
The water supply hose must be connected to the washing machine at one end and to the water faucet at the other. Do not stretch the water supply hose. If the hose is too short and you do not wish to move the water faucet, replace the hose with a longer, high-pressure hose.

Select appropriate faucet as shown in the figures below. If none of these faucets are available, use the faucet adapter provided.

The end of faucet spout should be longer than 10mm (0.4"), or the connector cannot be fixed properly. Water leakage could develop.

<p>1. Connect the water inlet hose to the faucet by turning the connecting nut.</p>  <p>CONNECTING NUT SEALING RING</p> <p>Be sure a rubber ring is inside the connecting nut.</p>	<p>2. Then connect the other end of water inlet hose to the cold connector in water mixing valve by turning the connecting nut.</p>  <p>CONNECTING NUT WATER INLET HOSE LID OF HOT WATER CONNECTOR COLD WATER CONNECTOR</p>
---	---

If you have both cold and hot water supplied, connect the inlet hoses by matching cold to cold and hot to hot.

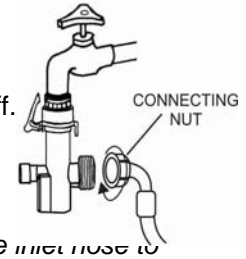
<p>1. Connect the water inlet hoses to the faucets by turning the connecting nuts.</p>  <p>CONNECTING NUT CONNECTING NUT WATER INLET HOSE</p> <p>Be sure the rubber rings are inside the connecting nuts.</p>	<p>2. Unscrew the lid of hot water connector in water mixing valve, and then connect the other end of water inlet hoses to the connectors in water mixing valve by turning the connecting nuts.</p>  <p>CONNECTING NUT WATER INLET HOSE HOT WATER CONNECTOR COLD WATER CONNECTOR</p>
---	--



➤ DISCONNECTING THE INLET HOSE

Dismantling the hose directly may cause water to splash due to the possible high water pressure in the hose, even after the faucet has been turned off. Please take off the hose as per following steps, even if the faucet is closed:

- Turn off the faucet.
- Turn on the power and let the machine run for about 5 seconds then turn it off.
- Remove the connecting nuts from the faucet and washing machine.

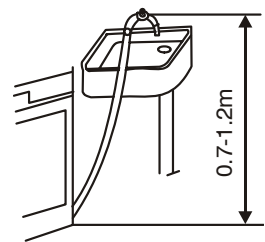


Note: If the washing machine is frequently used, it is not necessary to dismantle the hose to avoid possible damage to the screws.

➤ POSITIONING THE DRAIN HOSE

Connect the drain hose to the water outlet of the washing machine then fasten it with a pinchcork. Since only up drainage is available, drain hose can be hung in the basin or bathtub.

NOTE: The highest point of the drain hose must be in the height of 0.7-1.2m above floor level, otherwise, the washer cannot work normally.



➤ ELECTRICAL CONNECTION

⚡ Warning ⚡

Improper use of the grounded plug can result in the risk of electrical shock. If the power cord is damaged, have it replaced by an authorized Avanti Products service center.

This portable washer should be properly grounded for your safety. The power cord of this portable washer is equipped with a three-prong plug which mates with standard three prong wall outlets to minimize the possibility of electrical shock.

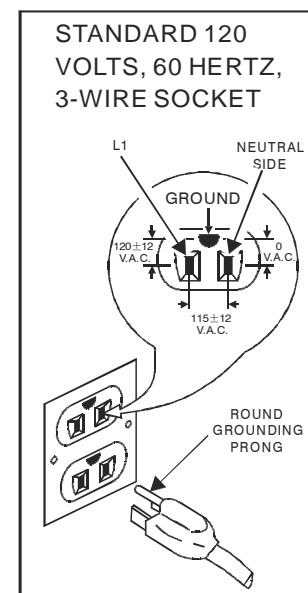
Do not under any circumstances cut or remove the third ground prong from the power cord supplied.

This portable washer requires a standard 110-120 Volts~A.C./60Hz electrical outlet with three-prong ground.

The cord should be secured behind the portable washer and not left exposed or dangling to prevent accidental injury.

Never unplug the portable washer by pulling the power cord. Always grip the plug firmly and pull straight out from the receptacle.

Do not use an extension cord with this appliance. If the power cord is too short, have a qualified electrician or service technician install an outlet near the appliance.





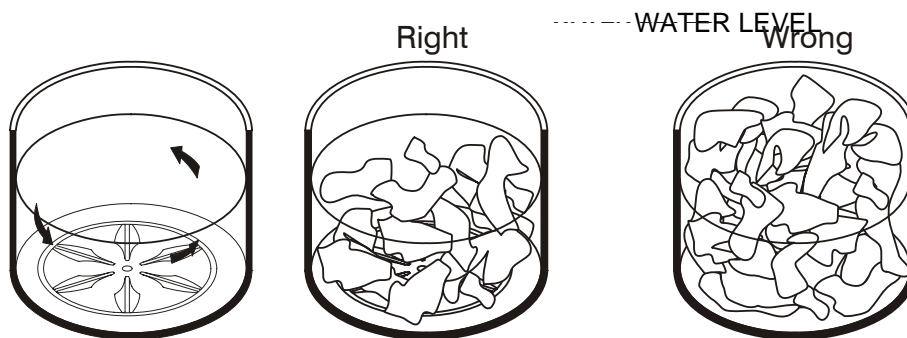
OPERATING YOUR PORTABLE WASHER

PREPARATION

<p>1. Connect the water inlet hose to the water faucet. Don't switch on the power if the water pressure is lower than 0.05MPa and higher than 0.5MPa.</p> <p>2. Open the water faucet.</p>	<p>3. Insert the plug into the socket. For safety the plug should have ground connection.</p>	<p>4. Insert the end of drain hose into the hook shelf, and hang the drain hose over a drain outlet.</p>
<p>5. Put the wash load into the tub evenly.</p>	<p>6. Add the suitable quantity detergent into the detergent case.</p>	<p>7. Close the lid. Otherwise the washer will not operate.</p>

BEFORE WASHING

Prepare the wash load. Mix large and small articles in a load to get the best washing results. Drop articles loosely into the inner tub. Do not pack articles in or wrap them. Articles should move freely through the wash water for best cleaning results. Articles should rollover, sink and then reappear. When washing very large articles, do not fill inner tub as full as with other loads. The water level in your washer should fit the size of your wash load. Small load will use lower water levels. There must be enough water in the inner tub to allow articles to move and turn over freely. Overloading the inner tub can result in poor washing and rinsing. Overloading may also cause wrinkling and tearing of articles.





OPERATION INSTRUCTIONS

PRESS DOWN POWER BUTTON.

PRESS DOWN WATER LEVEL BUTTON.

Choose appropriate water level according to wash load quantity.

WATER TEMPERATURE CHOICE.

Press down the water temperature selection button, you can choose to inlet cold water or hot water. When the cold-water indicator and the hot-water indicator turn on simultaneously, which means you chose the warm water.

NOTE: The washer will provide a cold rinse in all TEMPERATURE settings.

IMPORTANT: A single cold hose system does not allow the washing machine to automatically (select) regulate incoming water temperatures to match those listed on the control panel such as WARM or HOT.

PRESS DOWN WASH TIME SELECTION BUTTON.

Press down wash time selection button to select the wash time. You can also press the button to select soak.

NOTE: When all indicators are OFF, the wash cycle is finished.

PRESS DOWN RINSE TIMES SELECT BUTTON.

Press this button to select the times of rinse. When SPRAY RINSE is selected, the washing machine will spray water to rinse firstly during rinse course.

NOTE: When all indicators are OFF, the rinse cycle is finished.

PRESS DOWN SPIN TIME SELECT BUTTON.

Press this button to select the time of spin.

NOTE: When all indicators are OFF, the spin cycle is finished.

IMPORTANT NOTE: *You can select different WASH, RINSE and SPIN combinations according to your needs.*

PRESS DOWN PRESET BUTTON.

Press this button for delay start setting and children-proof setting.

PRESS DOWN FUNCTIONS SELECTION BUTTON.

Choose the desired function and then the corresponding indicator blink.

PRESS DOWN START/HOLD BUTTON ONCE AND THE MACHINE WILL BEGIN OPERATION.

Please press this button to stop the normal operation, if it continues to work, press it again.

Water level can be reset during the normal operation. If the higher water level is selected, the machine will operate after refilling the water level selected.

AUTOMATIC WASH PROGRAMS

NORMAL – For normal laundry

- Press down the power button.
- The NORMAL indicator will be ON. (NORMAL is the default program)
- Press the water supply button to select the water temperature.
- Press the water level button to select the appropriate water level setting. (The default water level is HIGH)
- Press the START/HOLD to start the course. And the LED display will show the remaining time of the entire course.



SOAK – For dirty laundry

- Press down the power button.
- Press the functions button to select the SOAK function until the SOAK indicator is ON.
- Press the water supply button to select the water temperature.
- Press the water level button to select the appropriate water level setting.
- Press the START/HOLD to start the course. And the LED display will show the remaining time of the entire course.

SPEEDY – For light dirty laundry

- Press down the power button.
- Press the functions button to select the SPEEDY function until the SPEEDY indicator is ON.
- Press the water supply button to select the water temperature.
- Press the water level button to select the appropriate water level setting. Press the START/HOLD to start the course. And the LED display will show the remaining time of the entire course.

JEANS – For massive laundry

- Press down the power button.
- Press the functions button to select the JEANS function until the JEANS indicator is ON.
- Press the water supply button to select the water temperature.
- Press the water level button to select the appropriate water level setting.
- Press the START/HOLD to start the course. And the LED display will show the remaining time of the entire course.

GENTLE – For elaborate laundry

- Press down the power button.
- Press the functions button to select the GENTLE function until the GENTLE indicator is ON.
- Press the water supply button to select the water temperature.
- Press the water level button to select the appropriate water level setting.
- Press the START/HOLD to start the course. And the LED display will show the remaining time of the entire course.

BLANKET – For big laundry

- Press down the power button.
- Press the functions button to select the BLANKET function until the BLANKET indicator is ON.
- Press the water supply button to select the water temperature.
- Press the water level button to select the appropriate water level setting.
- Press the START/HOLD to start the course. And the LED display will show the remaining time of the entire course.

DELICATES – For small laundry

- Press down the power button.
- Press the functions button to select the DELICATES function until the DELICATES indicator is ON.
- Press the water supply button to select the water temperature.
- Press the water level button to select the appropriate water level setting. (The default water level is LOW-LEV2)
- Press the START/HOLD to start the course. And the LED display will show the remaining time of the entire course.

EXTRA RINSE – For children laundry

- Press down the power button.
- Press the functions button to select the EXTRA RINSE function until the EXTRA RINSE indicator is ON.
- Press the water supply button to select the water temperature.
- Press the water level button to select the appropriate water level setting.
- Press the START/HOLD to start the course. And the LED display will show the remaining time of the entire course.



MANUAL FUNCTIONS

WASH ONLY

- Press down the power button.
- Press the functions button to select the appropriate program.
- Press the water supply button to select the water temperature.
- Press the water level button to select the appropriate water level setting.
- Press the wash button to select the wash time.
- Press the rinse button until all rinse indicators are OFF.
- Press the spin button until all spin indicators are OFF.
- Press the START/HOLD to start the course. And the LED display will show the remaining time of the entire course.

WASH AND RINSE

- Press down the power button.
- Press the functions button to select the appropriate program.
- Press the water supply button to select the water temperature.
- Press the water level button to select the appropriate water level setting.
- Press the wash button to select the wash time.
- Press the rinse button to select the rinse times.
- Press the spin button until all spin indicators are OFF.
- Press the START/HOLD to start the course. And the LED display will show the remaining time of the entire course.

RINSE AND SPIN

- Press down the power button.
- Press the water level button to select the appropriate water level setting.
- Press the wash button until all wash indicators are OFF.
- Press the rinse button to select the rinse times.
- Press the spin button to select the spin time.
- Press the START/HOLD to start the course. And the LED display will show the remaining time of the entire course.

SPIN ONLY

- Press down the power button.
- Press the wash button until all wash indicators are OFF.
- Press the rinse button until all rinse indicators are OFF.
- Press the spin button to select the spin time.
- Press the START/HOLD to start the course. And the LED display will show the remaining time of the entire course.

FUNCTIONS

Each wash set is programmed in the computer; see the details in the wash program chart.

FUNCTION	SOAK	WASH	RINSE	SPIN	TOTAL TIME (Approx.)
NORMAL		12 Min.	2 Cycles	5 Min.	46 Min.
SOAK	20 Min.	12 Min.	2 Cycles	5 Min.	66 Min.
SPEEDY		6 Min.	1 Cycle	3 Min.	27 Min.
JEANS		12 Min.	2 Cycles	5 Min.	46 Min.
GENTLE		12 Min.	2 Cycles	3 Min.	44 Min.
BLANKET		12 Min.	2 Cycles	5 Min.	46 Min.
DELICATES		6 Min.	2 Cycles	3 Min.	38 Min.
EXTRA RINSE		12 Min.	3 Cycles	5 Min.	57 Min.



Press down each button within 5 minutes since the program will reset the process group. Then press down STRAT/HOLD button to re-start the washing machine. If not, the washing machine will shut down automatically.

Close the lid, or the washing machine will not operate.

In case the unbalance of load triggers the safety switch when spinning, the washing machine will automatically refill water to adjust the balance.

Note:

- Clothes easily discolored should be washed separately so as to prevent inter-dyeing.
- If you want to change a selected program, please press the START/HOLD button first, then press the Program button before pushing START/HOLD button.
- When Rinse & Drain program is ON, do not use detergent.
- If you want to drain water during washing, press the START/HOLD button, then select Rinse and Drain program. Press START/HOLD button again to restart.

DELAY START SETTING

Select this course when you have to go out or do something else.

- Press down the power button.
- Load the washing machine and select the appropriate wash program.
- Press PRESET button continuously to select the delay start time. (From 1 hour to 24 hours)
- Close the lid completely.
- Press START/HOLD button to start the course.

CHILDREN-PROOF SETTING

Select the function, the program will hold the washing machine and give out alert voice once the lid is opened when washing. And the washing machine will automatically drain water and give alarm if the lid is not closed in 10 seconds. In case a child falls into the washing machine when he plays around, he will be in safe status.

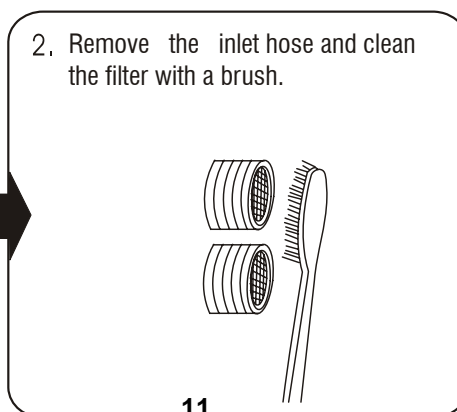
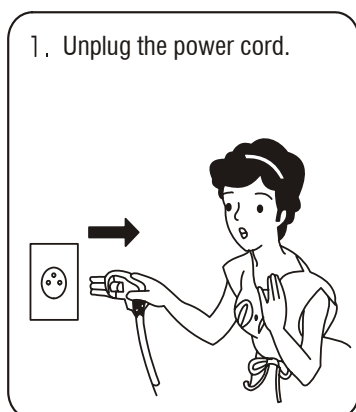
- Press down the power button.
- Select the appropriate program and press START/HOLD button to start the washing machine.
- The washing machine buzzer will give out music and the digital indicator show . This time you must decide whether to select the function or not.
- Press the PRESET button to select the function and the dot indicator will be ON. If no, don't do anything.

NOTE: If you open the lid while the machine in running, all operations will be stopped within 7 seconds. To resume operation, close the lid.

CARE AND MAINTENANCE

➤ CLEANING YOUR PORTABLE WASHER

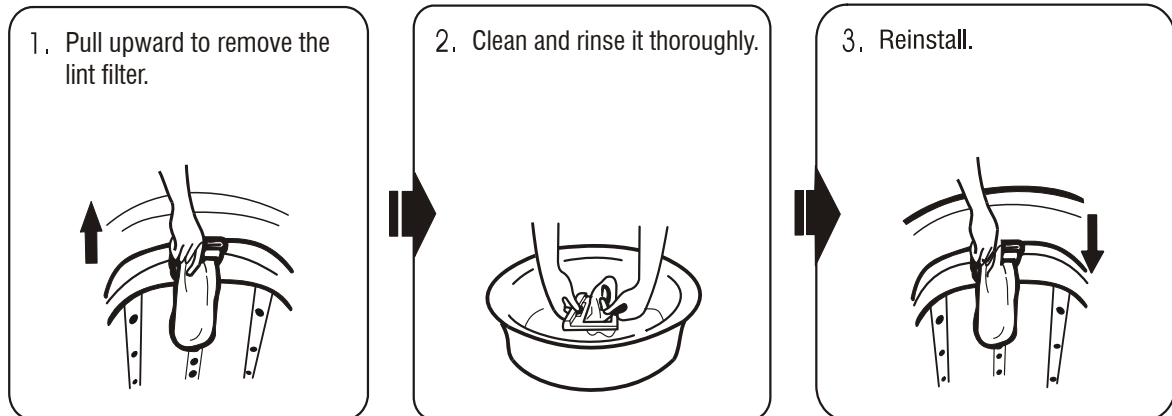
- Clean the surface of your portable washer regularly with soft fabric.
- Clean the inner tub regularly, especially immediately after starch or bleach operation.
- Clean the filter in the inlet valve or inlet hose regularly in order to prevent it from clogging.



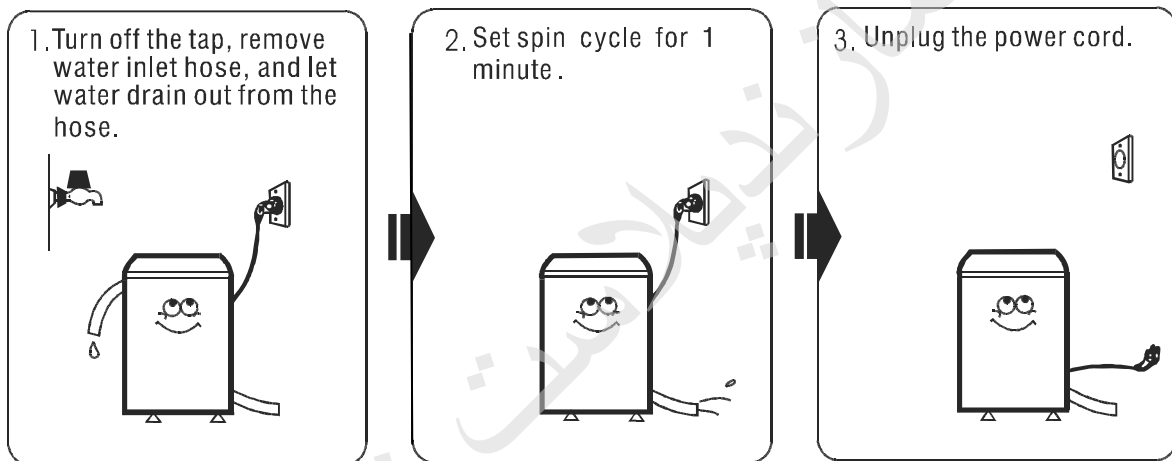
- Clean the surface of the washing machine with a soft cloth regularly.
- Clean the inner tub regularly, especially after washing starched or bleached laundry.



- Clean the lint filter.

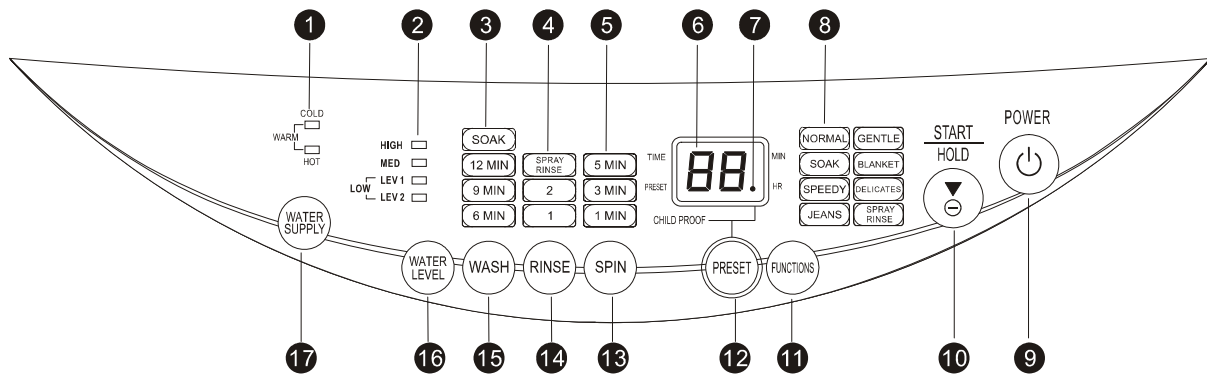


- Vacation time





4. CONTROL PANEL



1. Water Temperature Indicator
2. Water Level Indicator
3. Wash Time Indicator
4. Rinse Time Indicator
5. Spin Time Indicator
6. LED Display
7. Children-proof Indicator
8. Function Indicator
9. Power Button
10. START/HOLD Button
11. Function Selection Button
12. Preset Button
13. Spin Time Selection Button
14. Rinse Time Selection Button
15. Wash Time Selection Button
16. Water Level Selection Button
17. Water Temperature Selection Button

